

접수번호 : 22-081377-25-1  
(Receipt No.)



# 안전인증서

## Safety Certificate

안전인증번호 : SU10509-16006A  
(Certificate No.)

제조사/수입업자명 : SuZhou MEAN WELL Technology Co., Ltd.  
(Manufacturer/importer)

주소 : No.269, ChangPing Road, Huangdai Town, Xiangcheng District,  
(Address) Suzhou, China

제품명 : 직류전원장치(AC/DC Switching Adaptor)  
(Product)

기본모델명 : GST25A48  
(Basic Model)

파생모델명 : See the attachment 2  
(Series Model)

정격/안전기준상의 모델구분 : 100-240 Vac, 50/60 Hz, 0.6 A, Class I  
(Rating) (Output: 48 Vdc, 0.52 A, 25 W MAX.)

시험기준 : K60950-1(2011-12)  
(Standard)

본 인증서는 제조국명 : 중국  
제조사명 : SuZhou MEAN WELL Technology Co., Ltd.  
제조공장의 주소 : No.269, ChangPing Road, Huangdai Town, Xiangcheng District, Suzhou, China  
의 제품에만 해당함

「전기용품 및 생활용품 안전관리법 시행규칙」 제9조제2항, 제4항, 제10조제2항 또는 제15조제2항에 따라 안전인증서를 발급합니다.

We Issue This Safety Certificate for the above appliances in accordance with the Article 9(2),9(4),10(2) or 15(2) of the Enforcement Rule of the Electrical Appliances and Consumer Products Safety Control Act.

2023 년 03 월 09 일  
Year month day

한국산업기술시험원  
KOREA TESTING LABORATORY



\* 이 인증서는 「전기용품 및 생활용품 안전관리법 시행규칙」에 따른 제품의 안전성 확인에 한정된 것이며, 그 밖의 다른 법률이 적용되는 제품의 경우에는 해당 법률에 따라 추가로 인증·허가 등을 받아야 합니다.

첨부서류

1. 전기용품의 안전관리부품 및 재질목록(List of Critical Components)
2. 기본모델·파생모델의 내용 (Descriptions of the basic and series model)
3. 안전인증의 변경 현황 (Revisions Status)

□ 첨부 1 : 전기용품의 안전관리부품 및 재질목록  
List of Critical Components

| 부품명(회로기호)<br>Component(Part no.) | 제조사(상표명)<br>Manufacturer(Brand)                    | 모델명(형식)<br>Model(Type)                   | 정격 또는 특성<br>Rating or Characteristics   | 인증마크<br>Tested by |
|----------------------------------|--|--|---|-------------------|
| Plastic Enclosure                | Sabic Innovative Plastics                          | SE1 or 945                               | V-0, 120 °C, min. 2.3 mm thick          | UL                |
| AC Inlet                         | Pronic Electronics (Shenzhen) Co., Ltd.            | PST-101                                  | 10 A, 250 Vac                           | VDE               |
| (Alternate)                      | Rong Feng Industrial Co., Ltd.                     | SS-120                                   | 10 A, 250 Vac                           | VDE               |
| (Alternate)                      | TECX-UNIONS Technology Corporation                 | TU-301-A, TU-301-AP, TU-301-S, TU-301-SP | 10 A, 250 Vac                           | VDE               |
| (Alternate)                      | Rong Feng Industrial Co., Ltd.                     | SS-7B                                    | 10 A, 250 Vac                           | VDE               |
| Fuse (FS1)                       | Littelfuse Inc.                                    | 392, 369                                 | T 2 A, 250 V                            | VDE               |
| (Alternate)                      | Ever Island Electric Co., Ltd. and Walter Electric | 2010 Serie(s)                            | T 2 A, 250 V                            | VDE               |
| (Alternate)                      | Conquer  | MST                                      | T 2 A, 250 V                            | VDE               |
| X-Capacitor (C1) (X1 or X2 type) | Kemet Electronics Italia Srl (Arcotronics SPA)     | R.46                                     | 0.22 uF, Min. 250 Vac, 110/125 °C       | ENEC              |
| (Alternate)                      | Kemet Electronics Italia Srl (Arcotronics SPA)     | R.49                                     | 0.22 uF, Min. 250 Vac, 110 °C           | ENEC              |
| (Alternate)                      | ISKRA D. D.  | KNB 1560                                 | 0.22 uF, 275 V, 110 °C or 300 V, 125 °C | VDE               |
| (Alternate)                      | ISKRA D. D.  | KNB 1530                                 | 0.22 uF, Min. 250 Vac, 100 °C           | VDE               |
| (Alternate)                      | Liow Gu Electronics Industry Co. Ltd.              | GS-L                                     | 0.22 uF, Min. 250 Vac, 110 °C           | ENEC              |
| (Alternate)                      | Pilkor Electronics Ltd.                            | PCX2 337                                 | 0.22 uF, Min. 250 Vac, 110 °C           | ENEC              |
| (Alternate)                      | VISHAY Capacitors Belgium NV                       | 339                                      | 0.22 uF, Min. 250 Vac, 110 °C           | ENEC              |
| (Alternate)                      | Xiamen Faratronic                                  | MKP62                                    | 0.22 uF, Min. 250 Vac, 110 °C           | VDE               |
| (Alternate)                      | Hua Jung   | MKP                                      | 0.22 uF, Min. 250 Vac, 110 °C           | ENEC              |

| 부품명(회로기호)<br>Component(Part no.)            | 제조사(상표명)<br>Manufacturer(Brand)   | 모델명(형식)<br>Model(Type)          | 정격 또는 특성<br>Rating or Characteristics  | 인증마크<br>Tested by |
|---|---|---------------------------------|--|-------------------|
| (Alternate)                                 | Carli   | MPX                             | 0.22 uF, Min.<br>250 Vac, 110 °C   | VDE               |
| (Alternate)                                 | EPCOS<br>Electronic<br>Components S.A.                                      | B3292#CD<br>series              | 0.22 uF, Min.<br>250 Vac, 110 °C   | ENEC              |
| (Alternate)                                 | Ultra Tech Xiphi<br>Enterprise<br>Co. Ltd.                                  | HQX                             | 0.22 uF, Min.<br>250 Vac, 110 °C   | ENEC              |
| (Alternate)                                 | Joey  | MPX                             | 0.22 uF, Min.<br>250 Vac, 105 °C   | VDE               |
| (Alternate)                                 | EPCOS<br>Electronic<br>Components S.A.                                      | B3292#                          | 0.22 uF, Min.<br>250 Vac, 105 °C   | VDE               |
| (Alternate)                                 | Pilkor<br>Electronics Ltd.  | PCX2 335M                       | 0.22 uF, Min.<br>250 Vac, 105 °C   | ENEC              |
| Bridge Capacitor<br>(C21, C31)<br>(Y1 type) | Murata Mfg.<br>Co., Ltd.  | KX                              | C21: Max. 1000 pF<br>C31: Max. 2200 pF<br>Min. 250 Vac,<br>125 °C                      | VDE               |
| (Alternate)                                 | TDK-EPC<br>Corporation  | CD                              | C21: Max. 1000 pF<br>C31: Max. 2200 pF<br>Min. 250 Vac,<br>125 °C                      | VDE               |
| (Alternate)                                 | Walsin<br>Technology Corp   | AH                              | C21: Max. 1000 pF<br>C31: Max. 2200 pF<br>Min. 250 Vac,<br>125 °C                      | VDE               |
| (Alternate)                                 | Welson<br>Industrial Co., Ltd.  | WD                              | C21: Max. 1000 pF<br>C31: Max. 2200 pF<br>Min. 250 Vac,<br>125 °C                      | VDE               |
| Photo Coupler<br>(U2)                       | Lite-On<br>Technology<br>Corporation  | LTV-817,<br>LTV-817M,<br>LTV817 | Dti=0.4 mm,<br>Int. dcr=5.2 mm,<br>Ext. dcr=7.0 mm,<br>thermal cycling<br>test, 115 °C | VDE, FIMKO        |
| (Alternate)                                 | Sharp<br>Corporation<br>Electronic<br>Components<br>and Devices<br>Division | PC123                           | Dti=0.4 mm,<br>Ext. dcr=8.0 mm,<br>thermal cycle<br>test, 110 °C                       | VDE, Semko        |
| (Alternate)                                 | COSMO<br>Electronics<br>Corporation   | K1010                           | Dti=0.7 mm,<br>Ext. dcr=8.0 mm,<br>thermal cycle<br>test, 100 °C                       | VDE, Semko        |

| 부품명(회로기호)<br>Component(Part no.)                            | 제조사(상표명)<br>Manufacturer(Brand)                                       | 모델명(형식)<br>Model(Type) | 정격 또는 특성<br>Rating or Characteristics   | 인증마크<br>Tested by        |
|---|---|------------------------|---|--------------------------|
| (Alternate)   | Toshiba Corp,<br>Semiconductor<br>Co Discrete<br>Semiconductor<br>Div | TLP785F                | Di=0.6 mm,<br>Int. dcr=5.0 mm,<br>Ext. dcr=8 mm,<br>thermal cycling<br>test, 115 °C   | VDE                      |
| (Alternate)   | Toshiba Corp,<br>Semiconductor<br>Co Discrete<br>Semiconductor<br>Div | TLP785                 | Di=0.6 mm,<br>Int. dcr=5.0 mm,<br>Ext. dcr=6.5 mm,<br>thermal cycling<br>test, 115 °C | VDE                      |
| (Alternate)   | Toshiba Corp,<br>Semiconductor<br>Co Discrete<br>Semiconductor<br>Div | TLP781F                | Di=0.6 mm,<br>Int. dcr=5.0 mm,<br>Ext. dcr=8 mm,<br>thermal cycling<br>test, 115 °C   | VDE                      |
| (Alternate)   | Toshiba Corp,<br>Semiconductor<br>Co Discrete<br>Semiconductor<br>Div | TLP781                 | Di=0.6 mm,<br>Int. dcr=5.0 mm,<br>Ext. dcr=6.5 mm,<br>thermal cycling<br>test, 115 °C | VDE                      |
| Transformer<br>(T1)<br>(for model<br>GST25A05,<br>GST18A05) | Mean Well   | TF-1460A               | Class B   | Tested with<br>appliance |
| (Alternate)<br>(for model<br>GST25A07,<br>GST18A07)         | Mean Well   | TF-1461A               | Class B   | Tested with<br>appliance |
| (Alternate)<br>(for model<br>GST25A09,<br>GST18A09)         | Mean Well   | TF-1462A               | Class B   | Tested with<br>appliance |
| (Alternate)<br>(for model<br>GST25A12,<br>GST18A12)         | Mean Well   | TF-1463A               | Class B   | Tested with<br>appliance |
| (Alternate)<br>(for model<br>GST25A15,<br>GST18A15)         | Mean Well   | TF-1464A               | Class B   | Tested with<br>appliance |
| (Alternate)<br>(for model<br>GST25A18,<br>GST18A18)         | Mean Well   | TF-1465A               | Class B   | Tested with<br>appliance |
| (Alternate)<br>(for model<br>GST25A24,<br>GST18A24)         | Mean Well   | TF-1466A               | Class B   | Tested with<br>appliance |

| 부품명(회로기호)<br>Component(Part no.)                    | 제조사(상표명)<br>Manufacturer(Brand) | 모델명(형식)<br>Model(Type) | 정격 또는 특성<br>Rating or Characteristics | 인증마크<br>Tested by        |
|---|---------------------------------|------------------------|---------------------------------------|--------------------------|
| (Alternate)<br>(for model<br>GST25A28,<br>GST18A28) | Mean Well                       | TF-1467A               | Class B                               | Tested with<br>appliance |
| (Alternate)<br>(for model<br>GST25A48,<br>GST18A48) | Mean Well                       | TF-1468A               | Class B                               | Tested with<br>appliance |
| (Alternate)<br>(for model<br>GST25A05,<br>GST18A05) | JET SIGNAL                      | TF-1460A               | Class B                               | Tested with<br>appliance |
| (Alternate)<br>(for model<br>GST25A07,<br>GST18A07) | JET SIGNAL                      | TF-1461A               | Class B                               | Tested with<br>appliance |
| (Alternate)<br>(for model<br>GST25A09,<br>GST18A09) | JET SIGNAL                      | TF-1462A               | Class B                               | Tested with<br>appliance |
| (Alternate)<br>(for model<br>GST25A12,<br>GST18A12) | JET SIGNAL                      | TF-1463A               | Class B                               | Tested with<br>appliance |
| (Alternate)<br>(for model<br>GST25A15,<br>GST18A15) | JET SIGNAL                      | TF-1464A               | Class B                               | Tested with<br>appliance |
| (Alternate)<br>(for model<br>GST25A18,<br>GST18A18) | JET SIGNAL                      | TF-1465A               | Class B                               | Tested with<br>appliance |
| (Alternate)<br>(for model<br>GST25A24,<br>GST18A24) | JET SIGNAL                      | TF-1466A               | Class B                               | Tested with<br>appliance |
| (Alternate)<br>(for model<br>GST25A28,<br>GST18A28) | JET SIGNAL                      | TF-1467A               | Class B                               | Tested with<br>appliance |
| (Alternate)<br>(for model<br>GST25A48,<br>GST18A48) | JET SIGNAL                      | TF-1468A               | Class B                               | Tested with<br>appliance |
| (Alternate)<br>(for model<br>GST25A05,<br>GST18A05) | TEN WELL                        | TF-1460A               | Class B                               | Tested with<br>appliance |

| 부품명(회로기호)<br>Component(Part no.)                    | 제조사(상표명)<br>Manufacturer(Brand) | 모델명(형식)<br>Model(Type) | 정격 또는 특성<br>Rating or Characteristics | 인증마크<br>Tested by        |
|---|---------------------------------|------------------------|---------------------------------------|--------------------------|
| (Alternate)<br>(for model<br>GST25A07,<br>GST18A07) | TEN WELL                        | TF-1461A               | Class B                               | Tested with<br>appliance |
| (Alternate)<br>(for model<br>GST25A09,<br>GST18A09) | TEN WELL                        | TF-1462A               | Class B                               | Tested with<br>appliance |
| (Alternate)<br>(for model<br>GST25A12,<br>GST18A12) | TEN WELL                        | TF-1463A               | Class B                               | Tested with<br>appliance |
| (Alternate)<br>(for model<br>GST25A15,<br>GST18A15) | TEN WELL                        | TF-1464A               | Class B                               | Tested with<br>appliance |
| (Alternate)<br>(for model<br>GST25A18,<br>GST18A18) | TEN WELL                        | TF-1465A               | Class B                               | Tested with<br>appliance |
| (Alternate)<br>(for model<br>GST25A24,<br>GST18A24) | TEN WELL                        | TF-1466A               | Class B                               | Tested with<br>appliance |
| (Alternate)<br>(for model<br>GST25A28,<br>GST18A28) | TEN WELL                        | TF-1467A               | Class B                               | Tested with<br>appliance |
| (Alternate)<br>(for model<br>GST25A48,<br>GST18A48) | TEN WELL                        | TF-1468A               | Class B                               | Tested with<br>appliance |
| PCB   | Interchangeable                 | Interchangeable        | V-1 or better,<br>min. 105 °C         | UL                       |
| Bleeder Resistors<br>(R1, R2)                       | Interchangeable                 | Interchangeable        | Each max. 10 M<br>ohms, min. 1/4 W    | Tested with<br>appliance |

| 부품명(회로기호)<br>Component(Part no.)  | 제조사(상표명)<br>Manufacturer(Brand) | 모델명(형식)<br>Model(Type) | 정격 또는 특성<br>Rating or Characteristics | 인증마크<br>Tested by |
|---|---------------------------------|------------------------|---------------------------------------|-------------------|
| <p><input type="checkbox"/> 유의사항 (Attention) :</p> <p>1. 안전관리부품은 전기적인 안전에 직접적인 영향을 주는 부품으로서 안전인증기관이 정기공장검사 시 확인 관리 하는 사항입니다. 따라서 상기목록에 기재된 사항을 변경하거나 또는 복수등재를 원하시는 경우는 안전인증기관에 인증변경신청을 하여야 합니다.</p> <p><i>As the "Critical components" are parts in directly related with safety, these components shall be checked during a factory inspection by the certification body. In case of applying multiple listing or changing the items above, the certification revision shall be applied.</i></p> <p>2. 인증변경신청 없이 임의로 변경하는 경우는, 전기용품 및 생활용품 안전관리법 시행규칙 제 21 조제 1 항 또는 제 38 조제 1 항 규정에 의한 안전인증 취소 혹은 안전확인신고 효력상실 사유가 됨을 유의하시기 바랍니다.</p> <p><i>The Safety Certification will be cancelled under the Article 21(1), 38(1) of the Enforcement Rule of the Electrical appliances and Consumer Products Safety Control Act if the contents of the Certification is altered without our authorization.</i></p> |                                 |                        |                                       |                   |

FP511-04

□ 첨부 2 : 기본모델 · 파생모델의 내용  
General description of Certified Products

| 파생모델명<br>Derivative model | 기본모델과의 차이점<br>Differences between the basic and derivative model(s)  |
|---------------------------|--|
| GST25A05                  | Same as basic model except for transformer type, output rating and model designation.<br>Output rating: 5 Vdc, 4 A, 20 W MAX.  |
| GST25A07                  | Same as basic model except for transformer type, output rating and model designation.<br>Output rating: 7.5 Vdc, 2.93 A, 22 W MAX.   |
| GST25A09                  | Same as basic model except for transformer type, output rating and model designation.<br>Output rating: 9 Vdc, 2.55 A, 23 W MAX.   |
| GST25A12                  | Same as basic model except for transformer type, output rating and model designation.<br>Output rating: 12 Vdc, 2.08 A, 250 W MAX.   |
| GST25A15                  | Same as basic model except for transformer type, output rating and model designation.<br>Output rating: 15 Vdc, 1.66 A, 25 W MAX.  |
| GST25A18                  | Same as basic model except for transformer type, output rating and model designation.<br>Output rating: 18 Vdc, 1.38 A, 25 W MAX.  |
| GST25A24                  | Same as basic model except for transformer type, output rating and model designation.<br>Output rating: 24 Vdc, 1.04 A, 25 W MAX.  |
| GST25A28                  | Same as basic model except for transformer type, output rating and model designation.<br>Output rating: 28 Vdc, 0.89 A, 25 W MAX.  |
| GST18A05                  | Same as basic model except for transformer type, input rating, output rating and model designation.<br>Input rating: 100-240 Vac, 50/60 Hz, 0.5 A<br>Output rating: 5 Vdc, 3 A, 15 W MAX.    |
| GST18A07                  | Same as basic model except for transformer type, input rating, output rating and model designation.<br>Input rating: 100-240 Vac, 50/60 Hz, 0.5 A<br>Output rating: 7.5 Vdc, 2 A, 15 W MAX.  |
| GST18A09                  | Same as basic model except for transformer type, input rating, output rating and model designation.<br>Input rating: 100-240 Vac, 50/60 Hz, 0.5 A<br>Output rating: 9 Vdc, 2 A, 18 W MAX.    |
| GST18A12                  | Same as basic model except for transformer type, input rating, output rating and model designation.<br>Input rating: 100-240 Vac, 50/60 Hz, 0.5 A<br>Output rating: 12 Vdc, 1.5 A, 18 W MAX. |
| GST18A15                  | Same as basic model except for transformer type, input rating, output rating and model designation.<br>Input rating: 100-240 Vac, 50/60 Hz, 0.5 A<br>Output rating: 15 Vdc, 1.2 A, 18 W MAX. |



| 파생모델명<br>Derivative model  | 기본모델과의 차이점<br>Differences between the basic and derivative model(s)   |
|--|---|
| GST18A18   | Same as basic model except for transformer type, input rating, output rating and model designation.<br>Input rating: 100-240 Vac, 50/60 Hz, 0.5 A<br>Output rating: 18 Vdc, 1 A, 18 W MAX.    |
| GST18A24   | Same as basic model except for transformer type, input rating, output rating and model designation.<br>Input rating: 100-240 Vac, 50/60 Hz, 0.5 A<br>Output rating: 24 Vdc, 0.75 A, 18 W MAX. |
| GST18A28   | Same as basic model except for transformer type, input rating, output rating and model designation.<br>Input rating: 100-240 Vac, 50/60 Hz, 0.5 A<br>Output rating: 28 Vdc, 0.64 A, 18 W MAX. |
| GST18A48   | Same as basic model except for input rating, output rating and model designation.<br>Input rating: 100-240 Vac, 50/60 Hz, 0.5 A<br>Output rating: 48 Vdc, 0.375 A, 18 W MAX.                  |
| <b>제품특기사항 및 시험조건</b><br><b>Remarks &amp; Test conditions</b>   |   |
| <p>1. Test Report Ref. No. : 16-029676-01 (2016.06.02)</p> <p>2. Product Description</p> <ul style="list-style-type: none"> <li>- Measured power consumption: 28 W</li> <li>- Class of equipment: Class I</li> <li>- Protection against ingress of water: IPX0</li> <li>- Mass of equipment (kg): 0.19 kg</li> </ul>                                     |   |
| <p>□ 본 제품의 시험내용에 관하여 문의하실 사항이 있으시면 아래 연락처로 문의하시기 바랍니다.<br/>       시험 담당자 / 연락처 : 디지털산업본부 전기전자기술센터 박 일우 / 02-860-1436</p> <p>□ <i>If you have any question on product testing, please contact the person below :</i><br/> <i>Job holder : S.M.A.R.T. Industry Division, Electrical and Electronic Technology Center, Park Il-Woo / +82 2 860-1436</i></p> |   |

FP511-05

첨부 3 : 안전인증의 변경 현황  
Revisions Status

| 변경발급 내용<br>Contents of Certificate Revisions  |
|---|
| 1 <sup>st</sup> Rev.) Change of manufacturer president and address (22-081377-25-1 : 2023.03.09.)<br>- Before : Mr. Jerry Lin /<br>No. 77, Jian-Min Road, Dong-Qiao, Pan-Yang Ind. Park, Huang-Dai Town, Xiang<br>Cheng District, Suzhou, Jiangsu 215152, P.R. China<br>After : Alan Liu /<br>No.269, ChangPing Road, Huangdai Town, Xiangcheng District, Suzhou, China |

FP511-06

접수번호 : 16-029676-01  
(Receipt No.)



# 전기용품안전인증서

## Electrical Appliances Safety Certificate

|                               |  |
|-------------------------------|--|
| 안전인증번호<br>(Certificate No.)   | : SU10509-16006  |
| 제조사명<br>(Manufacturer)        | : SuZhou MEAN WELL Technology Co., Ltd.  |
| 대표자명<br>(President)           | : Mr. Jerry Lin  |
| 제조공장의 주소<br>(Factory Address) | : No. 77, Jian-Min Road, Dong-Qiao, Pan-Yang Ind. Park,<br>Huang-Dai Town, Xiang-Cheng District, Suzhou, Jiangsu 215152,<br>P.R. China |
| 제품명<br>(Product)              | : 직류전원장치 (AC/DC Switching Adaptor)   |
| 기본모델명<br>(Basic Model)        | : GST25A48   |
| 정격<br>(Rating)                | : 100-240 Vac, 50/60 Hz, 0.6 A, Class I<br>(Output: 48 Vdc, 0.52 A, 25 W MAX.)   |
| 파생모델명<br>(Series Model)       | : See the attachment 2   |
| 적용기준<br>(Standard)            | : K 60950-1 (2011-12)  |

「전기용품안전 관리법 시행규칙」 제6조제2항에 따라 위의 전기용품에 대하여 안전인증서를 발급합니다.

*We Issue Electrical Appliances Safety Certification as above product by Article 6 Section 2 of the Electrical Appliances Safety Control Law Enforcement Regulation.*

2016 년 06 월 08 일  
Year month day



한국산업기술시험원  
KOREA TESTING LABORATORY



\* 이 인증서는 「전기용품안전 관리법」에 따른 전기용품 안전성 확인에 한정된 것이며, 그 밖의 다른 법률이 적용되는 제품의 경우에는 해당 법률에 따라 추가로 인증·허가 등을 받아야 합니다.

- 첨부 : (Annex)
1. 안전관리부품 및 재질목록 (List of Critical Components)
  2. 기본모델 · 파생모델의 내용 (Descriptions of the basic and series model)
  3. 전기용품안전인증의 변경 현황 (Revisions Status)

□ 첨부 1 : 안전관리부품 및 재질목록  
List of Critical Components

| 부품명(회로기호)<br>Component(Part no.) | 제조사(상표명)<br>Manufacturer(Brand)                    | 모델명(형식)<br>Model(Type)                   | 정격 또는 특성<br>Rating or Characteristics   | 인증마크<br>Tested by |
|----------------------------------|--|--|---|-------------------|
| Plastic Enclosure                | Sabic Innovative Plastics                          | SE1 or 945                               | V-0, 120 °C, min. 2.3 mm thick          | UL                |
| AC Inlet                         | Pronic Electronics (Shenzhen) Co., Ltd.            | PST-101                                  | 10 A, 250 Vac                           | VDE               |
| (Alternate)                      | Rong Feng Industrial Co., Ltd.                     | SS-120                                   | 10 A, 250 Vac                           | VDE               |
| (Alternate)                      | TECX-UNIONS Technology Corporation                 | TU-301-A, TU-301-AP, TU-301-S, TU-301-SP | 10 A, 250 Vac                           | VDE               |
| (Alternate)                      | Rong Feng Industrial Co., Ltd.                     | SS-7B                                    | 10 A, 250 Vac                           | VDE               |
| Fuse (FS1)                       | Littelfuse Inc.                                    | 392, 369                                 | T 2 A, 250 V                            | VDE               |
| (Alternate)                      | Ever Island Electric Co., Ltd. and Walter Electric | 2010 Serie(s)                            | T 2 A, 250 V                            | VDE               |
| (Alternate)                      | Conquer  | MST                                      | T 2 A, 250 V                            | VDE               |
| X-Capacitor (C1) (X1 or X2 type) | Kemet Electronics Italia Srl (Arcotronics SPA)     | R.46                                     | 0.22 uF, Min. 250 Vac, 110/125 °C       | ENEC              |
| (Alternate)                      | Kemet Electronics Italia Srl (Arcotronics SPA)     | R.49                                     | 0.22 uF, Min. 250 Vac, 110 °C           | ENEC              |
| (Alternate)                      | ISKRA D. D.  | KNB 1560                                 | 0.22 uF, 275 V, 110 °C or 300 V, 125 °C | VDE               |
| (Alternate)                      | ISKRA D. D.  | KNB 1530                                 | 0.22 uF, Min. 250 Vac, 100 °C           | VDE               |
| (Alternate)                      | Liow Gu Electronics Industry Co. Ltd.              | GS-L                                     | 0.22 uF, Min. 250 Vac, 110 °C           | ENEC              |
| (Alternate)                      | Pilkor Electronics Ltd.                            | PCX2 337                                 | 0.22 uF, Min. 250 Vac, 110 °C           | ENEC              |
| (Alternate)                      | VISHAY Capacitors Belgium NV                       | 339                                      | 0.22 uF, Min. 250 Vac, 110 °C           | ENEC              |
| (Alternate)                      | Xiamen Faratronic                                  | MKP62                                    | 0.22 uF, Min. 250 Vac, 110 °C           | VDE               |
| (Alternate)                      | Hua Jung   | MKP                                      | 0.22 uF, Min. 250 Vac, 110 °C           | ENEC              |

| 부품명(회로기호)<br>Component(Part no.)            | 제조사(상표명)<br>Manufacturer(Brand)   | 모델명(형식)<br>Model(Type)          | 정격 또는 특성<br>Rating or Characteristics  | 인증마크<br>Tested by |
|---|---|---------------------------------|--|-------------------|
| (Alternate)                                 | Carli   | MPX                             | 0.22 uF, Min.<br>250 Vac, 110 °C   | VDE               |
| (Alternate)                                 | EPCOS<br>Electronic<br>Components S.A.                                      | B3292#CD<br>series              | 0.22 uF, Min.<br>250 Vac, 110 °C   | ENEC              |
| (Alternate)                                 | Ultra Tech Xiphi<br>Enterprise<br>Co. Ltd.                                  | HQX                             | 0.22 uF, Min.<br>250 Vac, 110 °C   | ENEC              |
| (Alternate)                                 | Joey  | MPX                             | 0.22 uF, Min.<br>250 Vac, 105 °C   | VDE               |
| (Alternate)                                 | EPCOS<br>Electronic<br>Components S.A.                                      | B3292#                          | 0.22 uF, Min.<br>250 Vac, 105 °C   | VDE               |
| (Alternate)                                 | Pilkor<br>Electronics Ltd.  | PCX2 335M                       | 0.22 uF, Min.<br>250 Vac, 105 °C   | ENEC              |
| Bridge Capacitor<br>(C21, C31)<br>(Y1 type) | Murata Mfg.<br>Co., Ltd.  | KX                              | C21: Max. 1000 pF<br>C31: Max. 2200 pF<br>Min. 250 Vac,<br>125 °C                      | VDE               |
| (Alternate)                                 | TDK-EPC<br>Corporation  | CD                              | C21: Max. 1000 pF<br>C31: Max. 2200 pF<br>Min. 250 Vac,<br>125 °C                      | VDE               |
| (Alternate)                                 | Walsin<br>Technology Corp   | AH                              | C21: Max. 1000 pF<br>C31: Max. 2200 pF<br>Min. 250 Vac,<br>125 °C                      | VDE               |
| (Alternate)                                 | Welson<br>Industrial Co., Ltd.  | WD                              | C21: Max. 1000 pF<br>C31: Max. 2200 pF<br>Min. 250 Vac,<br>125 °C                      | VDE               |
| Photo Coupler<br>(U2)                       | Lite-On<br>Technology<br>Corporation  | LTV-817,<br>LTV-817M,<br>LTV817 | Dti=0.4 mm,<br>Int. dcr=5.2 mm,<br>Ext. dcr=7.0 mm,<br>thermal cycling<br>test, 115 °C | VDE, FIMKO        |
| (Alternate)                                 | Sharp<br>Corporation<br>Electronic<br>Components<br>and Devices<br>Division | PC123                           | Dti=0.4 mm,<br>Ext. dcr=8.0 mm,<br>thermal cycle<br>test, 110 °C                       | VDE, Semko        |
| (Alternate)                                 | COSMO<br>Electronics<br>Corporation   | K1010                           | Dti=0.7 mm,<br>Ext. dcr=8.0 mm,<br>thermal cycle<br>test, 100 °C                       | VDE, Semko        |

| 부품명(회로기호)<br>Component(Part no.)                            | 제조사(상표명)<br>Manufacturer(Brand)                                       | 모델명(형식)<br>Model(Type) | 정격 또는 특성<br>Rating or Characteristics   | 인증마크<br>Tested by        |
|---|---|------------------------|---|--------------------------|
| (Alternate)   | Toshiba Corp,<br>Semiconductor<br>Co Discrete<br>Semiconductor<br>Div | TLP785F                | Di=0.6 mm,<br>Int. dcr=5.0 mm,<br>Ext. dcr=8 mm,<br>thermal cycling<br>test, 115 °C   | VDE                      |
| (Alternate)   | Toshiba Corp,<br>Semiconductor<br>Co Discrete<br>Semiconductor<br>Div | TLP785                 | Di=0.6 mm,<br>Int. dcr=5.0 mm,<br>Ext. dcr=6.5 mm,<br>thermal cycling<br>test, 115 °C | VDE                      |
| (Alternate)   | Toshiba Corp,<br>Semiconductor<br>Co Discrete<br>Semiconductor<br>Div | TLP781F                | Di=0.6 mm,<br>Int. dcr=5.0 mm,<br>Ext. dcr=8 mm,<br>thermal cycling<br>test, 115 °C   | VDE                      |
| (Alternate)   | Toshiba Corp,<br>Semiconductor<br>Co Discrete<br>Semiconductor<br>Div | TLP781                 | Di=0.6 mm,<br>Int. dcr=5.0 mm,<br>Ext. dcr=6.5 mm,<br>thermal cycling<br>test, 115 °C | VDE                      |
| Transformer<br>(T1)<br>(for model<br>GST25A05,<br>GST18A05) | Mean Well   | TF-1460A               | Class B   | Tested with<br>appliance |
| (Alternate)<br>(for model<br>GST25A07,<br>GST18A07)         | Mean Well   | TF-1461A               | Class B   | Tested with<br>appliance |
| (Alternate)<br>(for model<br>GST25A09,<br>GST18A09)         | Mean Well   | TF-1462A               | Class B   | Tested with<br>appliance |
| (Alternate)<br>(for model<br>GST25A12,<br>GST18A12)         | Mean Well   | TF-1463A               | Class B   | Tested with<br>appliance |
| (Alternate)<br>(for model<br>GST25A15,<br>GST18A15)         | Mean Well   | TF-1464A               | Class B   | Tested with<br>appliance |
| (Alternate)<br>(for model<br>GST25A18,<br>GST18A18)         | Mean Well   | TF-1465A               | Class B   | Tested with<br>appliance |
| (Alternate)<br>(for model<br>GST25A24,<br>GST18A24)         | Mean Well   | TF-1466A               | Class B   | Tested with<br>appliance |

| 부품명(회로기호)<br>Component(Part no.)                    | 제조사(상표명)<br>Manufacturer(Brand) | 모델명(형식)<br>Model(Type) | 정격 또는 특성<br>Rating or Characteristics | 인증마크<br>Tested by        |
|---|---------------------------------|------------------------|---------------------------------------|--------------------------|
| (Alternate)<br>(for model<br>GST25A28,<br>GST18A28) | Mean Well                       | TF-1467A               | Class B                               | Tested with<br>appliance |
| (Alternate)<br>(for model<br>GST25A48,<br>GST18A48) | Mean Well                       | TF-1468A               | Class B                               | Tested with<br>appliance |
| (Alternate)<br>(for model<br>GST25A05,<br>GST18A05) | JET SIGNAL                      | TF-1460A               | Class B                               | Tested with<br>appliance |
| (Alternate)<br>(for model<br>GST25A07,<br>GST18A07) | JET SIGNAL                      | TF-1461A               | Class B                               | Tested with<br>appliance |
| (Alternate)<br>(for model<br>GST25A09,<br>GST18A09) | JET SIGNAL                      | TF-1462A               | Class B                               | Tested with<br>appliance |
| (Alternate)<br>(for model<br>GST25A12,<br>GST18A12) | JET SIGNAL                      | TF-1463A               | Class B                               | Tested with<br>appliance |
| (Alternate)<br>(for model<br>GST25A15,<br>GST18A15) | JET SIGNAL                      | TF-1464A               | Class B                               | Tested with<br>appliance |
| (Alternate)<br>(for model<br>GST25A18,<br>GST18A18) | JET SIGNAL                      | TF-1465A               | Class B                               | Tested with<br>appliance |
| (Alternate)<br>(for model<br>GST25A24,<br>GST18A24) | JET SIGNAL                      | TF-1466A               | Class B                               | Tested with<br>appliance |
| (Alternate)<br>(for model<br>GST25A28,<br>GST18A28) | JET SIGNAL                      | TF-1467A               | Class B                               | Tested with<br>appliance |
| (Alternate)<br>(for model<br>GST25A48,<br>GST18A48) | JET SIGNAL                      | TF-1468A               | Class B                               | Tested with<br>appliance |
| (Alternate)<br>(for model<br>GST25A05,<br>GST18A05) | TEN WELL                        | TF-1460A               | Class B                               | Tested with<br>appliance |

| 부품명(회로기호)<br>Component(Part no.)                    | 제조사(상표명)<br>Manufacturer(Brand) | 모델명(형식)<br>Model(Type) | 정격 또는 특성<br>Rating or Characteristics | 인증마크<br>Tested by        |
|---|---------------------------------|------------------------|---------------------------------------|--------------------------|
| (Alternate)<br>(for model<br>GST25A07,<br>GST18A07) | TEN WELL                        | TF-1461A               | Class B                               | Tested with<br>appliance |
| (Alternate)<br>(for model<br>GST25A09,<br>GST18A09) | TEN WELL                        | TF-1462A               | Class B                               | Tested with<br>appliance |
| (Alternate)<br>(for model<br>GST25A12,<br>GST18A12) | TEN WELL                        | TF-1463A               | Class B                               | Tested with<br>appliance |
| (Alternate)<br>(for model<br>GST25A15,<br>GST18A15) | TEN WELL                        | TF-1464A               | Class B                               | Tested with<br>appliance |
| (Alternate)<br>(for model<br>GST25A18,<br>GST18A18) | TEN WELL                        | TF-1465A               | Class B                               | Tested with<br>appliance |
| (Alternate)<br>(for model<br>GST25A24,<br>GST18A24) | TEN WELL                        | TF-1466A               | Class B                               | Tested with<br>appliance |
| (Alternate)<br>(for model<br>GST25A28,<br>GST18A28) | TEN WELL                        | TF-1467A               | Class B                               | Tested with<br>appliance |
| (Alternate)<br>(for model<br>GST25A48,<br>GST18A48) | TEN WELL                        | TF-1468A               | Class B                               | Tested with<br>appliance |
| PCB   | Interchangeable                 | Interchangeable        | V-1 or better,<br>min. 105 °C         | UL                       |
| Bleeder Resistors<br>(R1, R2)                       | Interchangeable                 | Interchangeable        | Each max. 10 M<br>ohms, min. 1/4 W    | Tested with<br>appliance |

유의사항 (Attention) :

1. 안전관리부품은 전기적인 안전에 직접적인 영향을 주는 부품으로서 안전인증기관이 정기공장검사 시 확인 관리 하는 사항입니다. 따라서 상기목록에 기재된 사항을 변경하거나 또는 복수등재를 원하시는 경우는 안전인증기관에 인증변경신청을 하여야 합니다.

*As the "Critical components" are parts in directly related with safety, these components shall be checked during a factory inspection by the certification body. In case of applying multiful listing or changing the items above, the certification revision shall be applied.*

2. 인증변경신청 없이 임의로 변경하는 경우는, 전기용품안전관리법 제 8 조제 1 항의 규정에 의한 안전인증취소 사유가 됨을 유의하시기 바랍니다.

*The Safety Certification will be cancelled under the Safety Control Law for Electrical Appliances, Paragraph 1 of Article 8 if the contents of the Certification is altered without our authorization.*



□ 첨부 2 : 기본모델 · 파생모델의 내용  
General description of Certified Products

| 파생모델명<br>Derivative model | 기본모델과의 차이점<br>Differences between the basic and derivative model(s)  |
|---------------------------|--|
| GST25A05                  | Same as basic model except for transformer type, output rating and model designation.<br>Output rating: 5 Vdc, 4 A, 20 W MAX.  |
| GST25A07                  | Same as basic model except for transformer type, output rating and model designation.<br>Output rating: 7.5 Vdc, 2.93 A, 22 W MAX.   |
| GST25A09                  | Same as basic model except for transformer type, output rating and model designation.<br>Output rating: 9 Vdc, 2.55 A, 23 W MAX.   |
| GST25A12                  | Same as basic model except for transformer type, output rating and model designation.<br>Output rating: 12 Vdc, 2.08 A, 250 W MAX.   |
| GST25A15                  | Same as basic model except for transformer type, output rating and model designation.<br>Output rating: 15 Vdc, 1.66 A, 25 W MAX.  |
| GST25A18                  | Same as basic model except for transformer type, output rating and model designation.<br>Output rating: 18 Vdc, 1.38 A, 25 W MAX.  |
| GST25A24                  | Same as basic model except for transformer type, output rating and model designation.<br>Output rating: 24 Vdc, 1.04 A, 25 W MAX.  |
| GST25A28                  | Same as basic model except for transformer type, output rating and model designation.<br>Output rating: 28 Vdc, 0.89 A, 25 W MAX.  |
| GST18A05                  | Same as basic model except for transformer type, input rating, output rating and model designation.<br>Input rating: 100-240 Vac, 50/60 Hz, 0.5 A<br>Output rating: 5 Vdc, 3 A, 15 W MAX.    |
| GST18A07                  | Same as basic model except for transformer type, input rating, output rating and model designation.<br>Input rating: 100-240 Vac, 50/60 Hz, 0.5 A<br>Output rating: 7.5 Vdc, 2 A, 15 W MAX.  |
| GST18A09                  | Same as basic model except for transformer type, input rating, output rating and model designation.<br>Input rating: 100-240 Vac, 50/60 Hz, 0.5 A<br>Output rating: 9 Vdc, 2 A, 18 W MAX.    |
| GST18A12                  | Same as basic model except for transformer type, input rating, output rating and model designation.<br>Input rating: 100-240 Vac, 50/60 Hz, 0.5 A<br>Output rating: 12 Vdc, 1.5 A, 18 W MAX. |
| GST18A15                  | Same as basic model except for transformer type, input rating, output rating and model designation.<br>Input rating: 100-240 Vac, 50/60 Hz, 0.5 A<br>Output rating: 15 Vdc, 1.2 A, 18 W MAX. |

| 파생모델명<br>Derivative model  | 기본모델과의 차이점<br>Differences between the basic and derivative model(s)   |
|--|---|
| GST18A18   | Same as basic model except for transformer type, input rating, output rating and model designation.<br>Input rating: 100-240 Vac, 50/60 Hz, 0.5 A<br>Output rating: 18 Vdc, 1 A, 18 W MAX.    |
| GST18A24   | Same as basic model except for transformer type, input rating, output rating and model designation.<br>Input rating: 100-240 Vac, 50/60 Hz, 0.5 A<br>Output rating: 24 Vdc, 0.75 A, 18 W MAX. |
| GST18A28   | Same as basic model except for transformer type, input rating, output rating and model designation.<br>Input rating: 100-240 Vac, 50/60 Hz, 0.5 A<br>Output rating: 28 Vdc, 0.64 A, 18 W MAX. |
| GST18A48   | Same as basic model except for input rating, output rating and model designation.<br>Input rating: 100-240 Vac, 50/60 Hz, 0.5 A<br>Output rating: 48 Vdc, 0.375 A, 18 W MAX.                  |
| 제품특기사항 및 시험조건<br>Remarks & Test conditions   |   |
| <p>1. Test Report Ref. No. : 16-029676-01 (2016.06.02)</p> <p>2. Product Description</p> <ul style="list-style-type: none"> <li>- Measured power consumption: 28 W</li> <li>- Class of equipment: Class I</li> <li>- Protection against ingress of water: IPX0</li> <li>- Mass of equipment (kg): 0.19 kg</li> </ul>   |   |
| <p>□ 본 제품의 시험내용에 관하여 문의하실 사항이 있으시면 아래 연락처로 문의하시기 바랍니다.<br/>시험담당자 : 디지털산업본부 정보조명평가센터 박일우 / 02-860-1436</p> <p>□ <i>If you have any question on product testing, please contact the person below :</i><br/>Job holder : S.M.A.R.T. Industry Division, IT &amp; Lighting Testing Center, Park Il-Woo / +82 2 860-1436</p> |   |

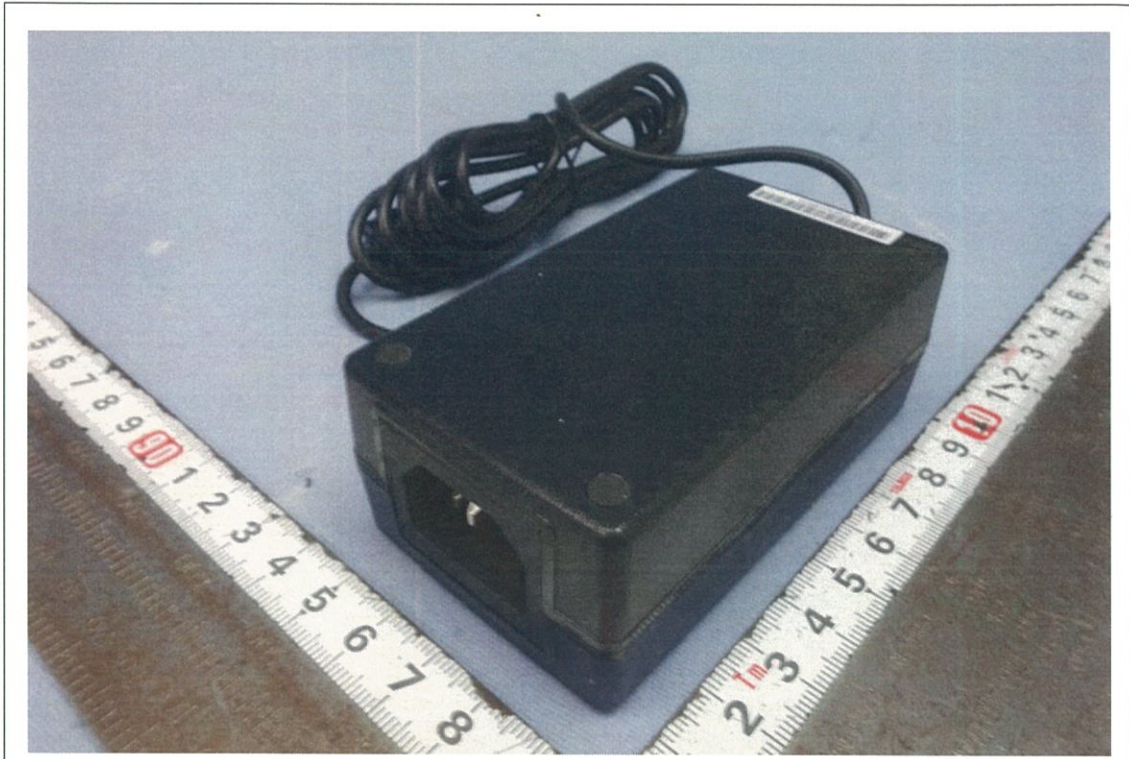
FP511-09-00

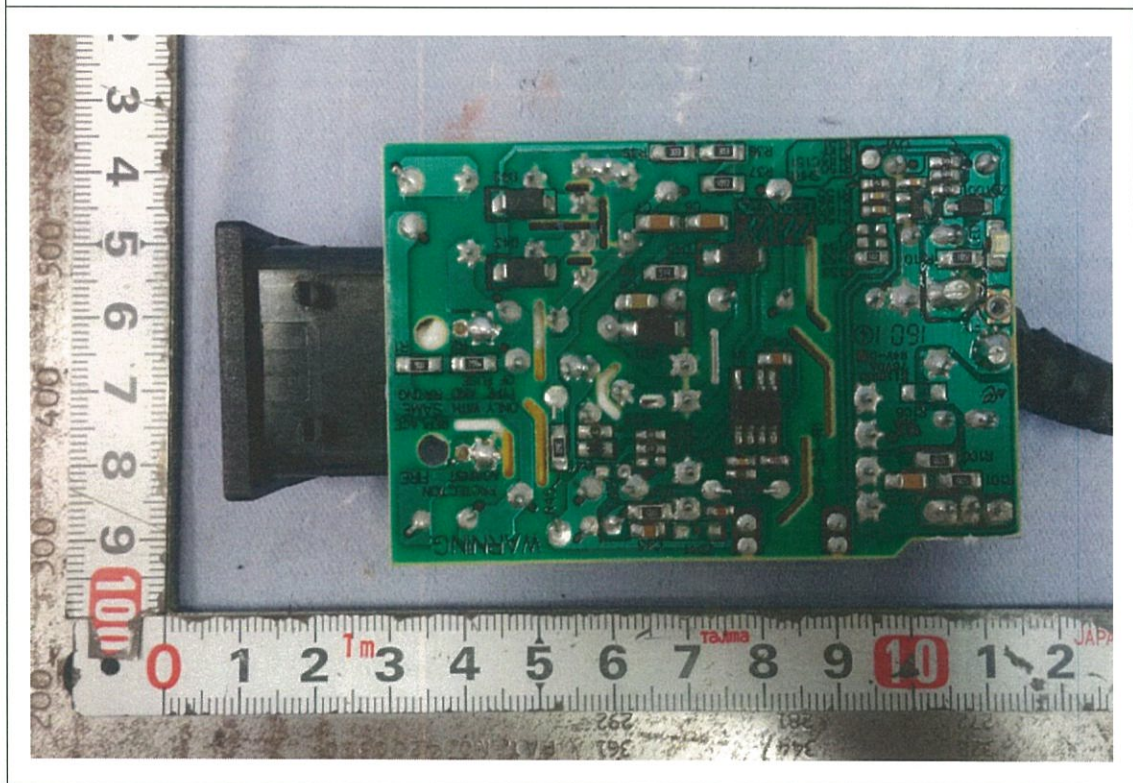
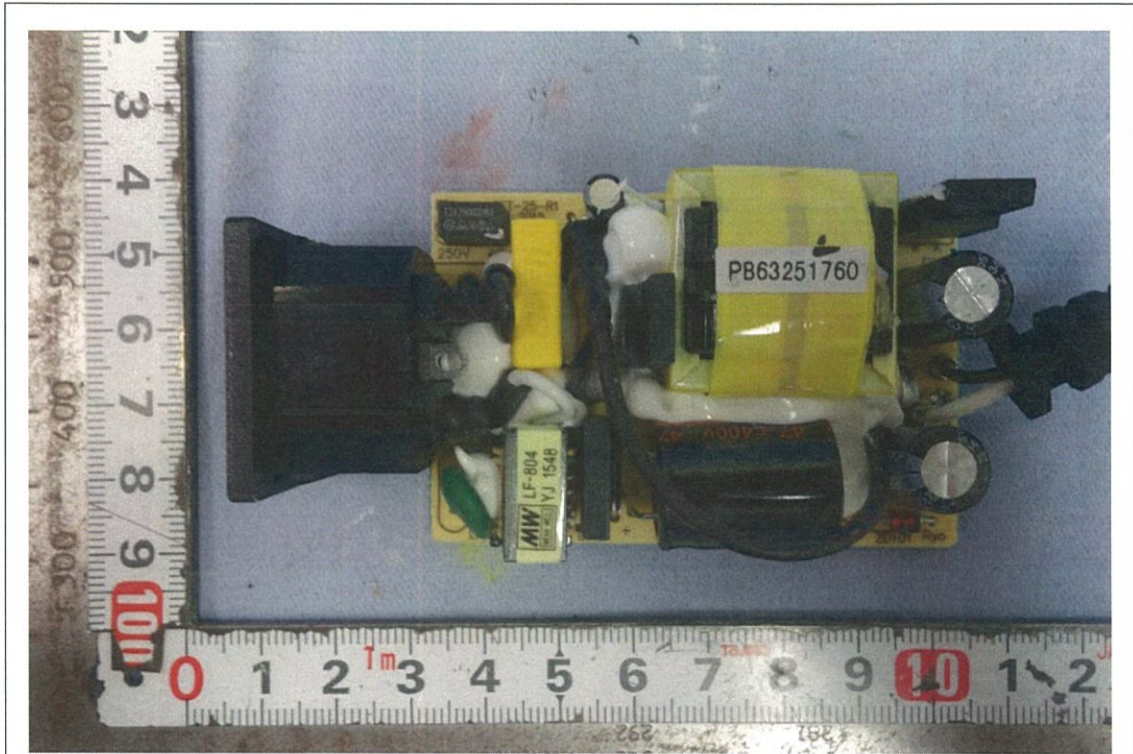
**첨부 3 : 전기용품안전인증의 변경 현황**  
Status of Certificate Revisions

| 변경발급 내용<br>Contents of Certificate Revisions |
|--|
| Not applicable                               |

FP511-11-00

첨부 : 제품사진  
Photographs





FG231-04-04-00