



Installation Manual

● Type : TDR DIN rail with Three Phase or High Input Range (Series : TDR-240)

Models	Rated Input	Rated Output	DC OK Relay contact
TDR-240-24	380-480 Vac, 3W+PE, Wye system (220-277 Vac / Phase voltage), 0.69 A, 50/60Hz	24Vdc(24-28Vdc), 10A (max 240W)	Contact Rating (max.) 30VDC/1A, 30VAC/0.5A Resistive load.
TDR-240-48		48Vdc(48-55Vdc), 5A (max 240W)	

Note.1: Pollution Degree 2 applies where there is only non-conductive pollution that might temporarily become conductive due to occasional condensation. Generally refer to dry, well-ventilated locations, such as control cabinets.

Note.2: Over voltage Category(OVC) III, according to EN61558-1, , EN61558-2-16, UL61010-1, UL61010-2-201.
Over voltage Category(OVC) II, according to EN62368-1, EN60664-1. Altitude 2000m.

Note.3: RATED INPUT VOLTAGE shall be fluctuated up to +10% and -10%.

Note.4: Others

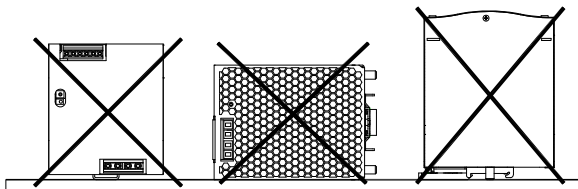
MTBF	515.4K hrs min. Telcordia SR-332(Bellcore); 215.6K hrs min. MIL-HDBK-217F (25°C)
DIMENSION	63*125.2*113.5mm (W*H*D)
PACKING	1Kg ; 12pcs/13Kg/1.06CUFT

● Introduction

TDR series is the next generation of Mean Well DIN rail power supplies with three-phase or high input range, this three-phase DIN unit not only has a slim design of 110mm in width but also possesses a high efficiency of up to 94.5%. Like other Mean Well's DIN series, they can be mounted on a TS35 Standard DIN rail. This are open type device shall be installed in inside of appropriate enclosure or machinery.

● Installation

- (1) Always allow good ventilation clearances, 20mm below, around the unit in use to prevent it from overheating. Also a 10-15 cm clearance must be kept when the adjacent device is a heat source.
- (2) The appropriate mounting orientation for the unit is vertical, the input terminals at the bottom and output on the top. Mounting orientations other than that, such as upside down, horizontal, or table-top mounting, is not allowed. 加上正確的安裝方式圖面



- (3) Use copper wire only, and recommended wires are shown as below.

AWG	18	16	14	12	10
-----	----	----	----	----	----

Installation Manual

Rated Current of Equipment (Amp)	6A	6-10A	13-16A	16-25A	25-32A
Cross-section of Lead(mm ²)	0.75	1.00	1.5	2.5	4
Note: Current each wire carries should be de-rated to 80% of the current suggested above when using 5 or more wires connected to the unit.					

Make sure that all strands of each stranded wire enter the terminal connection and the screw terminals are securely fixed to prevent poor contact. If the power supply possesses multi-output terminals, please make sure each contact is connected to wires to prevent too much current stress on a single contact.

- (4) Use input side wires that can withstand temperatures of at least 90°C such as UL1007. Use output side wires that can withstand temperatures of at least 100°C such as UL1007.
- (5) Recommended wire strapping length is 5mm (0.197”).
- (6) Recommended screwdriver is 4mm, slotted type.
- (7) The recommended torque setting for terminals is shown as below.

Model	I/P	O/P
TDR-240	Switchlab/MB910-952 10 kgf-cm (9 Lb-in)	Switchlab/MB910-635M 10 kgf-cm (9 Lb-in)

- (8) Suggested fuse and maximum number of the unit that can be connected to a circuit breaker at 480V are shown as below.

For USA, CANADA:

Considered current rating of protective device as part of the building installation (A) is 20 A.

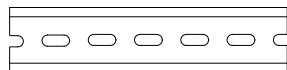
For EU:

Model	Fuse	Circuit breaker	
		C16	D16
TDR-240	T5AH/250V	2	4

- (9) Mounting Instruction :

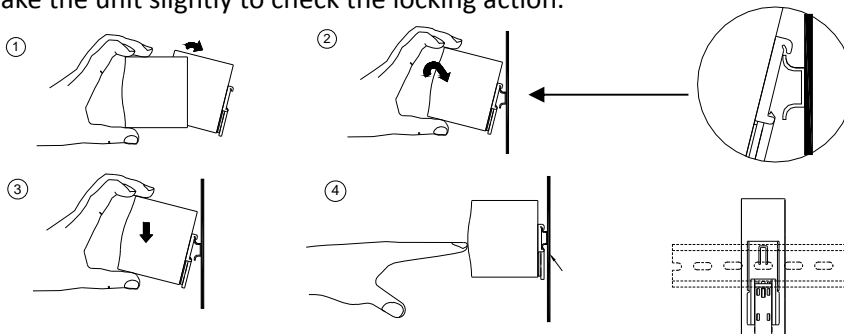
Mount as shown in figure only, with input terminals down, or else sufficient cooling will not be possible.

Admissible DIN rail : TS35/7.5 or TS35/15



For rail fastening :

- ① Tilt the unit slightly rearwards.
- ② Fit the unit over top hat rail.
- ③ Slide it downward until it hits the stop.
- ④ Press against the bottom for locking.
- ⑤ Shake the unit slightly to check the locking action.





Installation Manual

(10) For other information about the products, please refer to www.meanwell.com for details.

(11) If the equipment is used in a manner not specified by the manufacturer, the protection provided by the equipment may be impaired.

(12) The safety of any system incorporating the equipment is the responsibility of the assembler of the system

Installation Manual

● **Warning / Caution !!**



“CAUTION : FOR USE IN A CONTROLLED ENVIRONMENT. REFER TO MANUAL FOR ENVIRONMENTAL CONDITION”

- (1) Risk of electrical shock and energy hazard. All failure should be examined by a qualified technician. Please do not remove the case of the power supply by yourself!
- (2) Risk of electric arcs and electric shock (danger to life). Connecting both the primary and the secondary sides together is not allowed.
- (3) Risk of burn hazard. Do not touch the unit in operation and shortly after disconnection!
- (4) Risk of fire and short circuit. The openings should be protected from foreign objects or dripping liquids.
- (5) The maximum operating temperature is 60°C for the power supply, please do not install the unit in places with high ambient temperature or near fire source.
- (6) Instructions for installation in a Pollution Degree 2 environment (Note.1).
- (7) Please do not install the unit in places with high moisture or near the water.
- (8) The (⊕) must be connected to PE (Protective Earth).

- (9) Output current and output wattage must not exceed the rated values on its specification.
- (10) Disconnect system from supply voltage:
Before commencing any installation, maintenance or modification work: Disconnect your system from supply voltage. Make sure that inadvertent connection in circuit will be impossible!
- (11) For continued protection against risk of fire, replace only with same type and rating of fuse.

- (12) Before cleaning, disconnect your system form supply voltage.
Clean the terminal block and enclosures with a soft, dry, lint-free cloth. Do not use liquids or cleaning products.

“ATTENTION: UTILISATION DANS UN ENVIRONNEMENT CONTRÔLÉ. CONSULTEZ LE MANUEL POUR LES CONDITIONS ENVIRONNEMENTALES »

- (1) Risque d'électrocution et de danger énergétique. Toute défaillance doit être examinée par un technicien qualifié. Veuillez ne pas retirer le boîtier de l'alimentation électrique par vous-même!
- (2) Risque d'arc électrique et de choc électrique (danger de mort). Connecter les deux côtés primaire et secondaire n'est pas autorisé.
- (3) Risque de brûlure. Ne touchez pas l'appareil en cours de fonctionnement et peu après la déconnexion!
- (4) Risque d'incendie et de court-circuit. Les ouvertures doivent être protégées des corps étrangers ou des gouttes de liquide.
- (5) temperature La température maximale de fonctionnement est de 60 ° C pour l'alimentation électrique, veuillez ne pas installer l'appareil dans des endroits à température ambiante élevée ou à proximité d'une source d'incendie.
- (6) Instructions pour l'installation dans un environnement de degré de pollution 2 (Note.1).
- (7 not Veuillez ne pas installer l'appareil dans des endroits très humides ou près de l'eau.
- (8) Le (⊕) doit être connecté à PE (Terre de protection).

- (9) Le courant de sortie et la puissance de sortie ne doivent pas dépasser les valeurs nominales



Installation Manual

spécifiées.

(10) Débranchez le système de la tension d'alimentation:

Avant de commencer tout travail d'installation, de maintenance ou de modification: Déconnectez votre système de la tension d'alimentation. Assurez-vous que la connexion par inadvertance dans le circuit sera impossible!

(11) Pour une protection continue contre les risques d'incendie, ne remplacez qu'avec le même type et le même calibre de fusible.

Pour ne pas compromettre la protection contre les risques d'incendie, veuillez vous reporter à la rubrique «Fusible of same type and memes caractéristiques».

(12) Avant le nettoyage, débranchez la tension d'alimentation de votre système.

Nettoyez le bornier et les boîtiers avec un chiffon doux, sec et non pelucheux. N'utilisez pas de liquides ou de produits de nettoyage.

Manufacturer :

MEAN WELL ENTERPRISES Co., LTD.
No.28, Wuquan 3rd Rd., Wugu Dist.,
New Taipei City 24891, Taiwan
Tel: +886-2-2299-6100
Web: www.meanwell.com

Branch Office :

China

MEAN WELL (GUANGZHOU)
ENTERPRISES Co., LTD.
2F, A Building, Yuean Industry Park,
Huangcun, Dongpu Yown, Tianhe
District, Gungzhou, China
Post Code:510660
Tel: +86-20-2887-1200
Web: www.meanwell.com.cn

U.S.A.

MEAN WELL USA, INC.
44030 Fremont Blvd., Fremont,
CA 94538, U.S.A.
Tel: +1-510-683-8886
Web: www.meanwellusa.com

Europe

MEAN WELL EUROPE B.V.
Langs de Werf 8, 1185XT
Amstelveen, The Netherlands
Tel: +31-20-758-6000
Web: www.meanwell.eu